

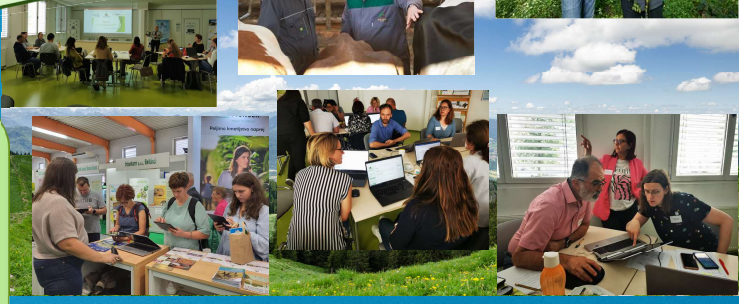
**User Case:**  
**Digitalization of the conventional**  
**Agricultural Advisory Service model**  
 Chamber of Agriculture and Forestry of Slovenia



**Main goal:** to improve the efficiency of work in advisory service through effective, digitized professional advising and to enable the digital networking of farmers and advisers from a wider geographical area, thus speeding up knowledge transfer.



**The main challenges/needs for us:**  
 Advisory service accessible to farmers at any time  
 It is important that our farmers have the opportunity to choose the time for training. It is also important that advising is available online at any time.  
 Reaching all farmers  
 Still, despite being usually very small, they play an essential role in preserving our landscape.  
 Advisers and advisors specialists will be able to reach more farmers  
 More advising on farms, and the possibility of answers to more specific farmers questions.  
 1:1 advice  
 An easy and trust worthy way to exchange information.  
 Professional materials and educational content are gathered in one place.  
 The goal is to combine all educational content in one place.



Active promotion of the platform

**Name:**  
**E naSVET KGZS**  
**„E-world of CAFS“ and „E-advice of CAFS“**

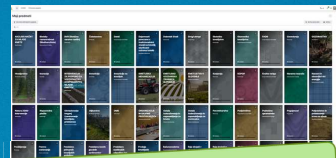
**Target users**  
 ✓ Farmers  
 ✓ Field advisors  
 ✓ Advisors specialist and coordinators  
 ✓ Other interested



**Vision:**  
**„Connected in knowledge for the future of Slovenian agriculture.“**

**Requirements in selecting appropriate DATS:**  
 ✓ Easy to use – user friendly  
 ✓ Not requiring additional technical staff  
 ✓ Possibility of uploading and viewing professional content in different forms  
 ✓ Open for upgrades/adjustments at any time  
 ✓ Possibility to obtain a training certificate automatically  
 ✓ Possibility of monitoring the level of usage  
 ✓ Many distinct user requirements  
 ✓ Possibility of own creativity

**Where is our application now?**  
 ✓ The application is in the operational phase.  
 ✓ We have upgraded to the latest version of moodle.  
 ✓ We have over 100 different contents loaded for testing.  
 ✓ It is used by more than 50 advisors (field advisors, specialists and coordinators), testing the functionalities and various possibilities of adding content.  
 ✓ We are making some minor content and technical corrections.  
 ✓ **We have a very positive response from the first farmers who tried it.**  
 ✓ We are planning to hold several workshops aimed at presenting and actively learning the platform.  
 ✓ We are preparing certain contents that will be available to users in their final form.  
 ✓ We want to put the new program and measures of the rural development program for 2024-2027 in the application as learning content for advisors.  
 ✓ **The platform is in the beginning of active dissemination among users.**



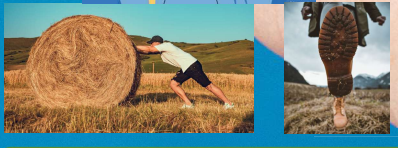
The current appearance of the platform



Workshop with advisors and farmers (actively getting to know and learning to work on the platform).

**SELECTED DATS... ..MOODLE PLATFORM**

✓ We made a hierarchy of user rights.  
 ✓ We predicted and prepared a set of necessary functions in the platform and added the possibility of adding different interactive content, additional tasks, and options for review and understanding.  
 ✓ Agreement with the contractor (IT company). Installation of the latest version of the Moodle e-learning platform and necessary plug-ins.  
 ✓ Our partner in the project is an IT company: Tovarna idej, "Factory of Ideas"



**Next step, steps in the future ...**  
 At the strategic workshop, we set not only the vision of our application, but also the key steps to achieve the goals that will guide us along the path of our vision.



Contact and author of poster: Marinka Korošec, CAFS, Slovenia marinka.korosec@kgzs.si